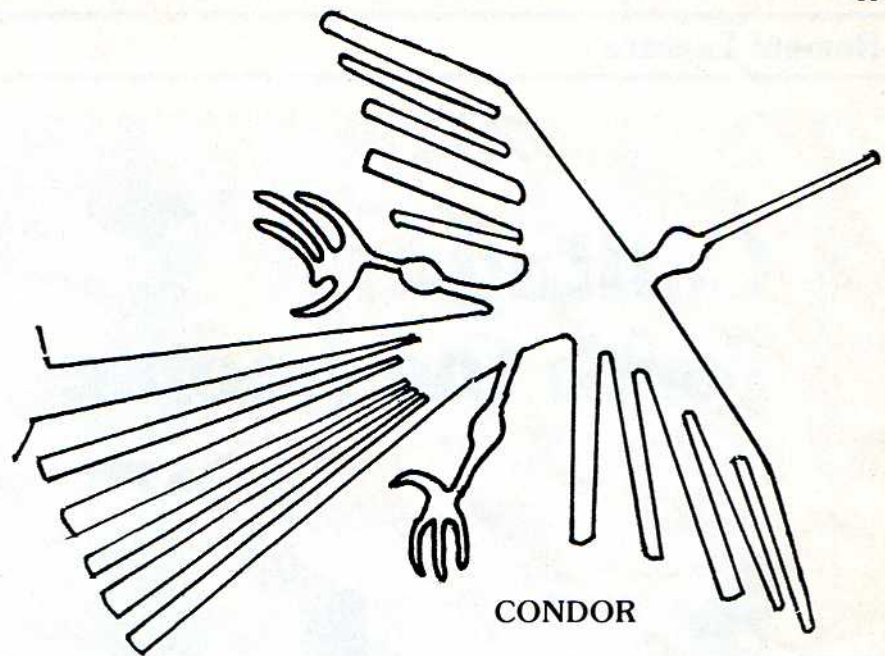
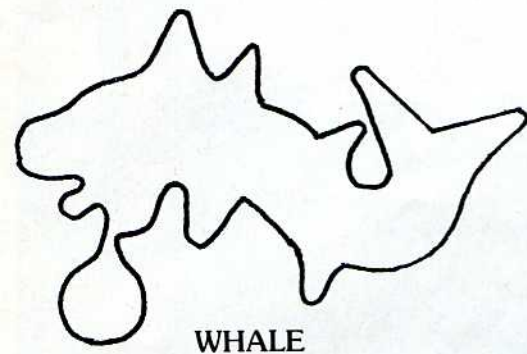


The Hidden Image of the Nazca Display

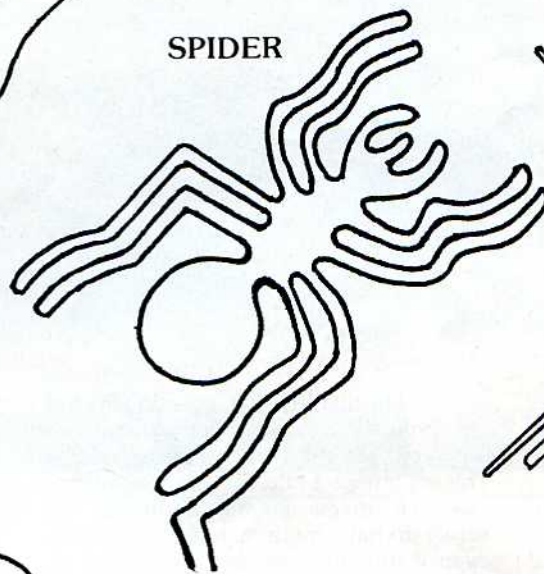
a product of social mechanisms for regulating the balance between resources and population". He further suggests that the drawings contained symbolic information mapped on the ground for successive generations to observe, recognise and memorise. It is the absence of any real answer to the question of how was the display to be observed, recognised and memorised by successive generations, if one cannot see it from ground level, that has occupied my time and which has led not only to a possible solution but led to the discovery of unique and previously unknown "images".



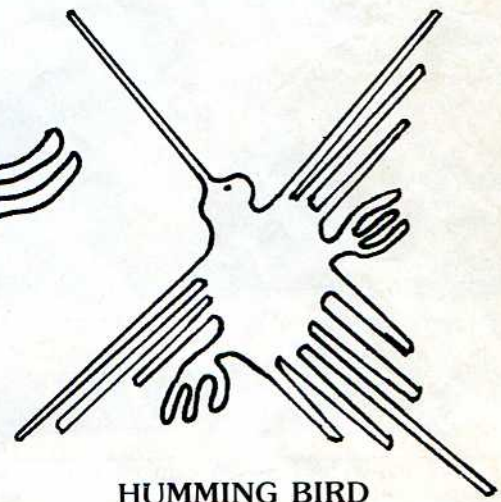
CONDOR



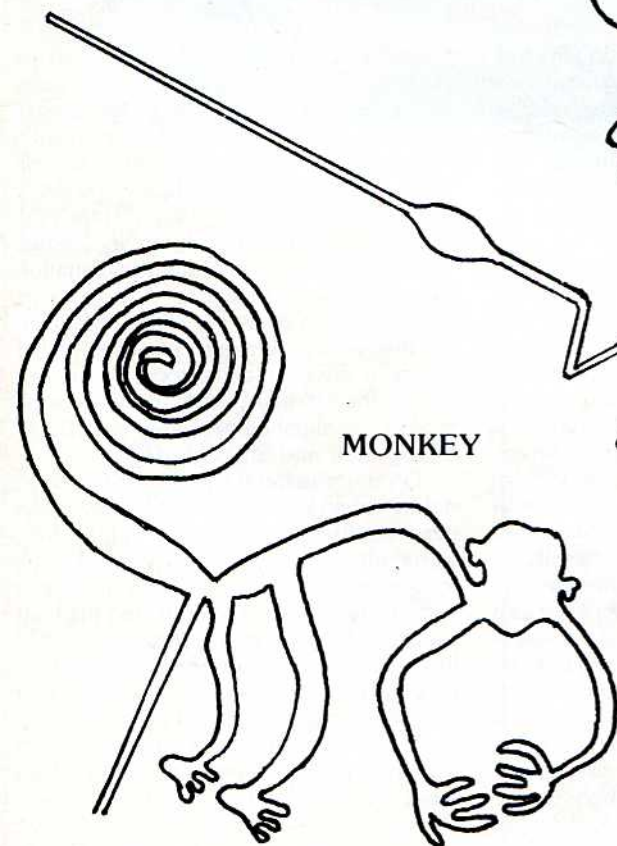
WHALE



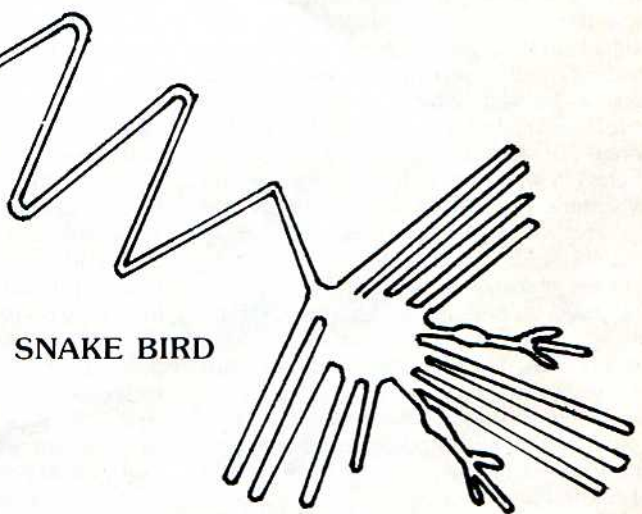
SPIDER



HUMMING BIRD



MONKEY



SNAKE BIRD

The Nazca Display incorporates almost forty known pictograms, some of which are shown above. The Condor is nearly 450 feet long and around 400 feet wide, the Snake Bird nearly 1000 feet in length, the Monkey and Hummingbird 380 feet and 300 feet overall respectively. The Whale extends to 230 feet, while the Spider is a little smaller at 150 feet front to back. The continuous single line construction is clearly shown as is the side-by-side "entrance and exit" points.